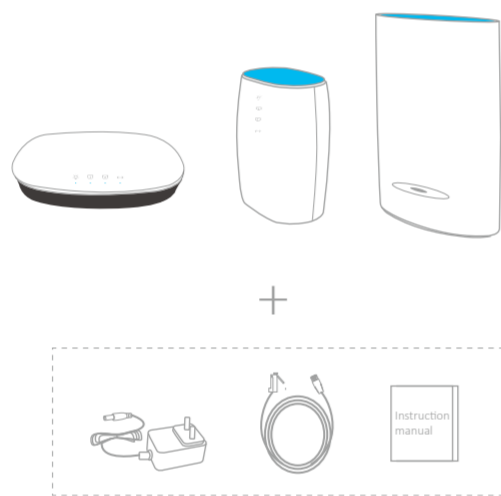


1 What's in the Package?

- 1 MESH+ Router
- 2 MESH+ Node
- 3 Cate5e Ethernet Cable
- 4 DC Power Adapter
- 5 Quick Start Guide



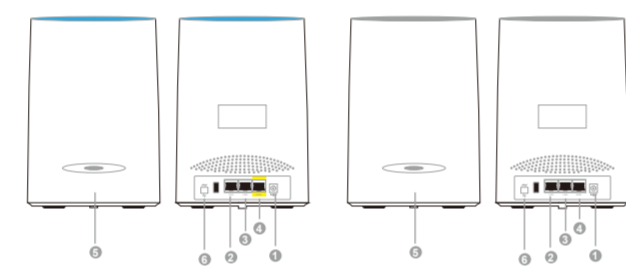
2 Interfaces

Link LED Status (E03Mx)

- 1. Color Red Turn ON: Power on
- 2. Color Red Blinking: Internet disconnected
- 3. Color Blue Stay ON: Internet connected
- 4. Color Blue Blinking: Link MESH searching

Link LED Status (E03Sx)

- 1. Color Red Turn ON: Power on
- 2. Color Red Blinking: Link MESH failed
- 3. Color Red Stay ON: Link MESH ready with bad quality
- 4. Color Blue Stay ON: Link MESH ready with good quality
- 5. Color Blue Blinking: Link MESH searching



Number	Description	Notice
1	ETH/DC	the adapter comes with package recommended
2	LAN	plug cat5e standard cables or above
3	LAN	plug cat5e standard cables or above
4	WAN/ETH	plug cat5e standard cables or above
5	MESH Connection	short click the indicator status labels
6	Restore settings	press down and hold on 10 seconds around
	Synchronize	short click 1 second at the router and node synchronously

MESH+ Smart WiFi System For E+ Series

Quick Start Guide



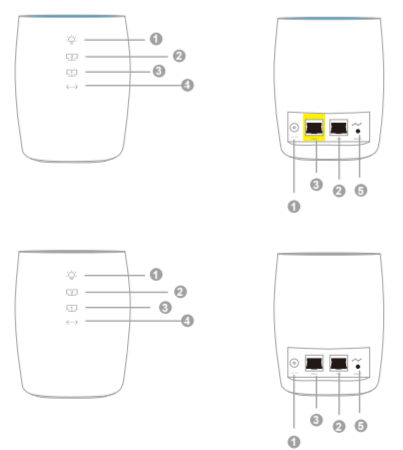
Make WiFi Smarter, Turn Life Easier

Link LED Status (E05Mx)

- 1. OFF: No Link MESH
- 2. Color Blue Stay ON: Link MESH ready with good quality
- 3. Color Blue Blinking: Link MESH searching

Link LED Status (E05Sx)

- 1. OFF: No Link MESH
- 2. Color Red Stay ON: Link MESH ready with bad quality
- 3. Color Blue Stay ON: Link MESH ready with good quality
- 4. Color Blue Blinking: Link MESH searching



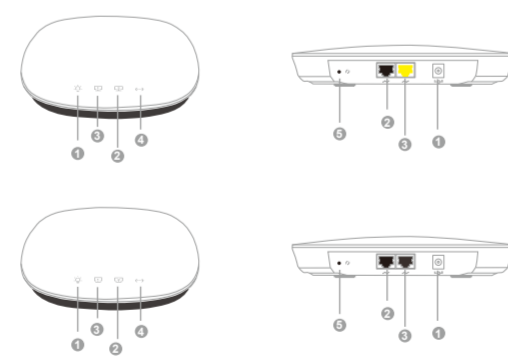
Number	Description	Notice
1	ETH/DC	the adapter comes with package recommended
2	LAN	plug cat5e standard cables or above
3	LAN/ETH	plug cat5e standard cables or above
4	MESH Connection	short click the indicator status labels
5	Restore settings	press down and hold on 10 seconds around
	Synchronize	short click 1 second at the router and node synchronously

Link LED Status (E06Mx)

- 1. OFF: No Link MESH
- 2. Color Blue Stay ON: Link MESH ready with good quality
- 3. Color Blue Blinking: Link MESH searching

Link LED Status (E06Sx)

- 1. OFF: No Link MESH
- 2. Color Red Stay ON: Link MESH ready with bad quality
- 3. Color Blue Stay ON: Link MESH ready with good quality
- 4. Color Blue Blinking: Link MESH searching



Number	Description	Notice
1	ETH/DC	the adapter comes with package recommended
2	LAN	plug cat5e standard cables or above
3	WAN/ETH	plug cat5e standard cables or above
4	MESH Connection	short click the indicator status labels
5	Restore settings	press down and hold on 10 seconds around
	Synchronize	short click 1 second at the router and node synchronously

Technical Support

Thanks for buying MESH+ smart WiFi Products. Please contact the manufacturers and distributors for more details about products classifications, specification, firmware, user manual. You have 3-years-free warranty.

*Please power the devices with the adapters from the package for stable and security working.

V_200704

3 Replace the Router

1. Power off the current router and unplug the cable from modem.

2. Power on the router with the attached adapter. The power indicator is on.

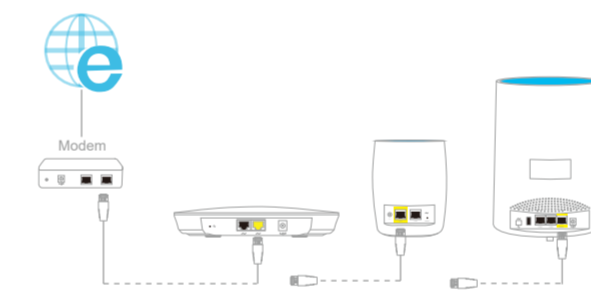
3. Plug the network cable to WAN port of router. Be sure the ethernet LED light is blinking.

*It's better to place the router on the desktop w/o barriers around.

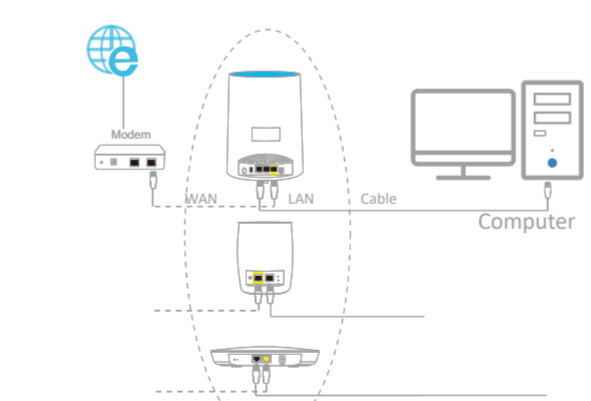
*take the router far way from microwave oven, fridge etc.

*Please power the devices with the adapters from the package for stable and security working.

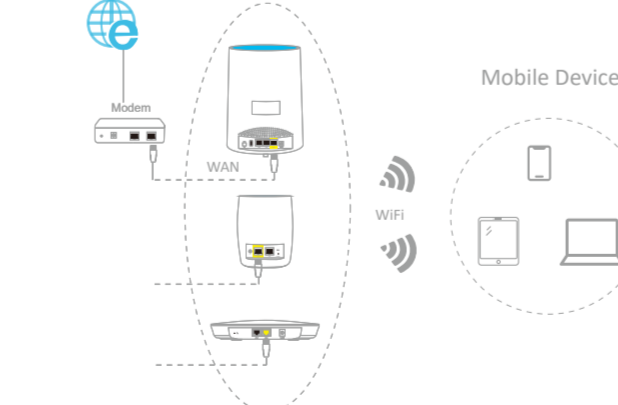
*We suggest you disable the Wi-Fi feature of modem if it has. Query the troubleshooting "How do I setup modem/router combo device?" from the usermanual if possible.



Ethernet:



WiFi:



4 Place the Node

The units within 2 or 3 pack, Router and Node, has been matched settings during production. The Node creates MESH+ connection with Router simply after power on.

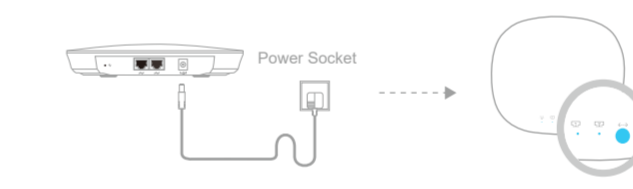
1. Take the node from box and place it to the point where router does not cover signal well.

* In general, the extender point is 30-50 feet line away for better mesh connection.

2. Power on the node. Confirm the link led status. The mesh link is horrible if it stays red color, please move the node close to router until it turns blue.

*If you buy the node separately, please synchronize the settings with Router by Sync button manually

* Please use the "Link LED indicator" to determine whether MESH+ connection created.



5 Connect the MESH+ Network

Two ways are available to connect the MESH+ smart Wi-Fi system:

Ethernet: Connect the computer with the router or the node by the network cable (Comes with the package).

*notice: it must plug the cable into devices' LAN port.

WiFi: Connect the mobile devices to the Smart WiFi Mesh System by WiFi Hotspots (SSID) and Password.

*Default SSID & password can be found at the device's body labels.



DHCP: Enable the feature on the computer and mobile devices to assure the dynamic IP address can be obtained. In fact, the default setting is "enable".

6 Have a Wizard Setup

There are two methods to setup the MESH+ System quickly.

1. By Mobile phone

It provides the Ezmesh App to setup and manage the system online.

a) Download and install from internet firstly. Search the keywords "ezmesh" at google play or app store, and you can scan the QR-code to find directly.



b) Connect the mobile phone to MESH+ system by WiFi, the default WiFi name is "e+wifi".

c) Run Ezmesh app to start Wizard step by step.

2. By Computer

a) Connect the PC host or laptop to MESH+ System by wired cable or WiFi.

b) Run Computer safari to access the mangement link "islogin.com" to start Wizard step by step.

* Default administrative account can be found at the devices' body labels.

* Safari, Chrome, Firefox browsers recommended.

*If the browser does not display the web page, follow the steps:

- a) Make sure that the computer is connected to the LAN Ethernet ports or WiFi to the router.
- b) Make sure that the router powered on and light is blinking.
- c) Run the browser or clear the browser cache.
- d) Access the link "islogin.com" by browsers.
- e) If the computer is set to a static IP address, change it to obtain an IP address automatically from the router.

*If the router does not connect to the internet, follow the steps:

- a) Review your settings.
- b) Make sure that you selected the correct options and typed everything correctly.
- c) Contact your ISP to verify that you are using the correct configuration information.
- d) Read Troubleshooting from usemanual.

If problems still stay, contact the manufacturers and distributors for technical support.



Setup Wizard (Six steps)